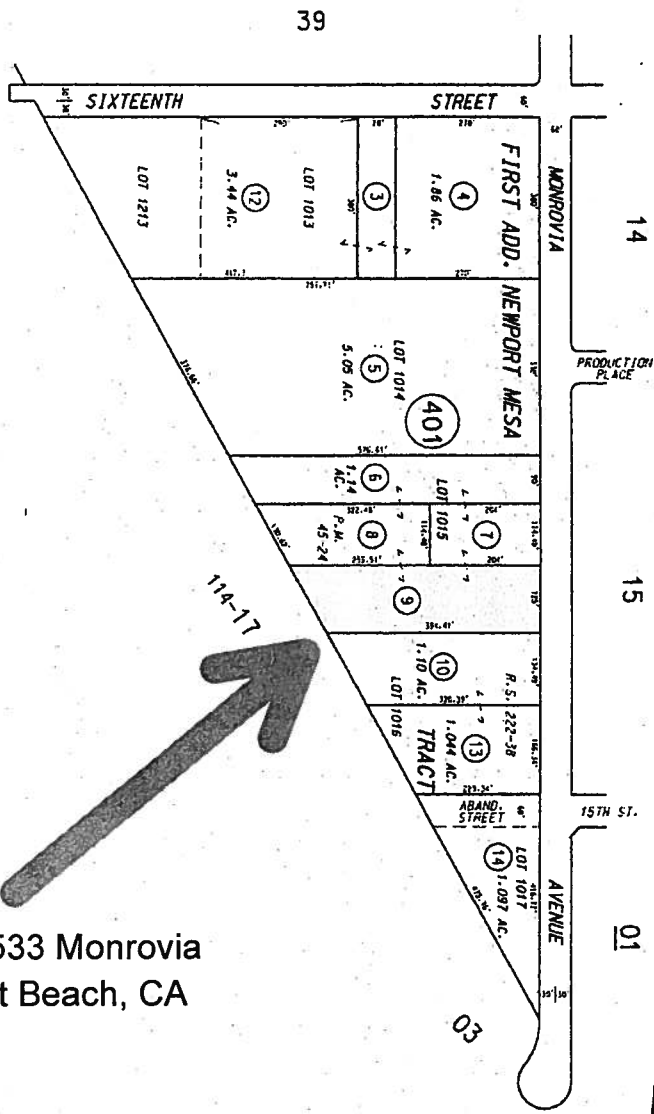


THIS MAP WAS PREPARED FOR ORANGE COUNTY AND THE COUNTY ASSESSOR. THE ASSessor MAKES NO GUARANTEE AS TO ITS ACCURACY NOR ASSUMES ANY LIABILITY FOR OTHER USES. NOT TO BE REPRODUCED, ALL RIGHTS RESERVED. COUNTY ASSESSOR 2008



1527-1533 Monrovia
Newport Beach, CA

MARCH 1980

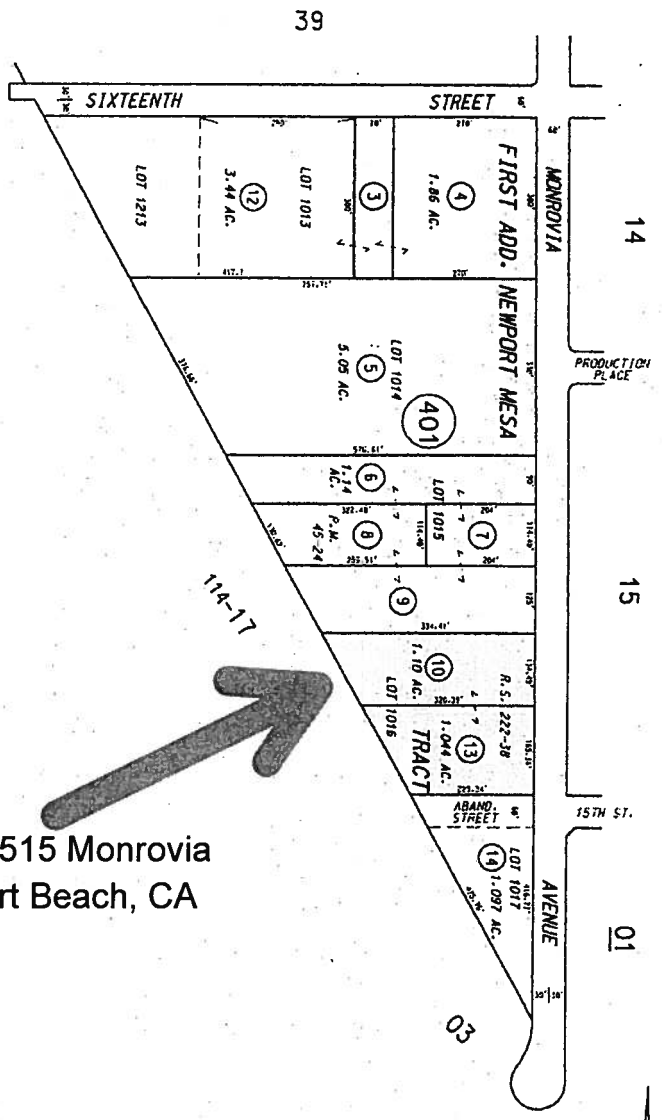
FIRST ADD. NEWPORT MESA TRACT
PARCEL MAP
M.M. 8-61
P.M. 45-24

NOTE - ASSESSOR'S BLOCK &
PARCEL NUMBERS
SHOWN IN CIRCLES
ASSESSOR'S MAP
BOOK 424 PAGE 40
COUNTY OF ORANGE



424-40

THIS MAP WAS PREPARED FOR ORANGE COUNTY ASSESSOR'S OFFICE. THE ASSESSOR MAKES NO GUARANTEE AS TO ITS ACCURACY NOR ASSUMES ANY LIABILITY FOR OTHER USES. NOT TO BE REPRODUCED. ALL RIGHTS RESERVED. COUNTY ASSESSOR 2008



1505-1515 Monrovia
Newport Beach, CA

1" = 200'

424-40

MARCH 1980

FIRST ADD. NEWPORT MESA TRACT
PARCEL MAP M.M. 8-61
P.M. 45-24

NOTE - ASSESSOR'S BLOCK &
PARCEL NUMBERS
SHOWN IN CIRCLES

ASSESSOR'S MAP
BOOK 424 PAGE 40
COUNTY OF ORANGE

